

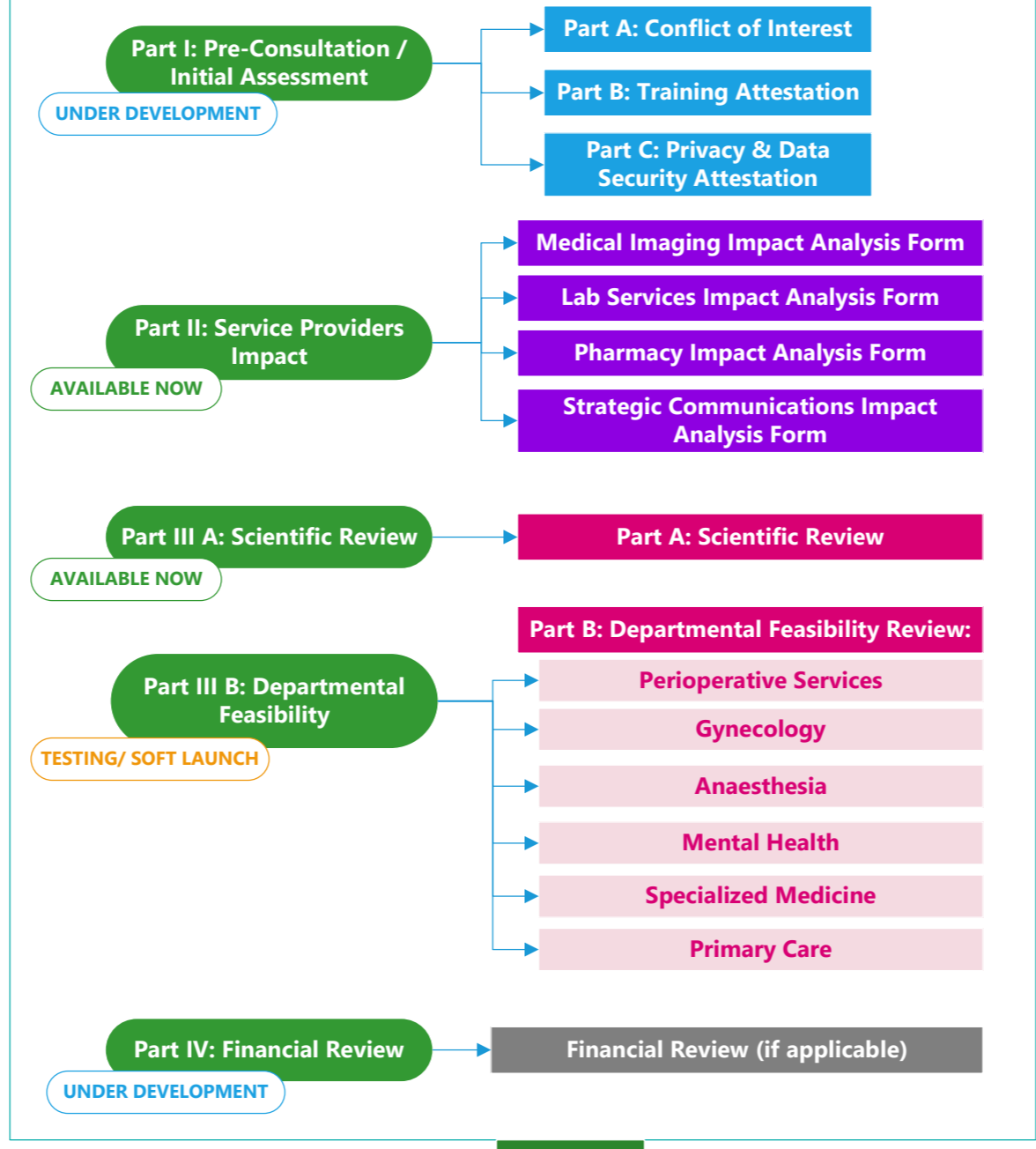
- The "CENTRAL FORM" in REDCap encompasses all parts of Step 2 including I, II, III, and IV.
- Parts I, II and III can be completed concurrently.
- **Only applicable sections will need to be completed.**
- REDCap\* access is required.

**Step 1: WCH Initiation Form**

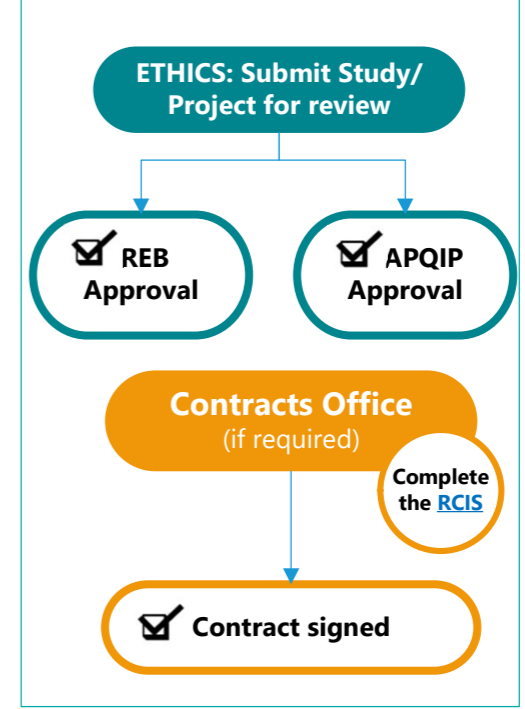
- \*Recommended**
- Academics has developed an electronic tool to help teams successfully initiate projects and studies
  - PI or Project Lead will require a WCH email address to proceed further beyond this tool
  - Comprised of a series of survey questions specific to the team's project or study concept
  - Determines what resources a team needs to move forward and begin their study or project
  - Once the form is completed an automatic checklist is generated outlining key contacts, links, resources, and other essential information to launch a project or study
  - Information from the initiation form will never be collected or fed into other systems

**GET STARTED**

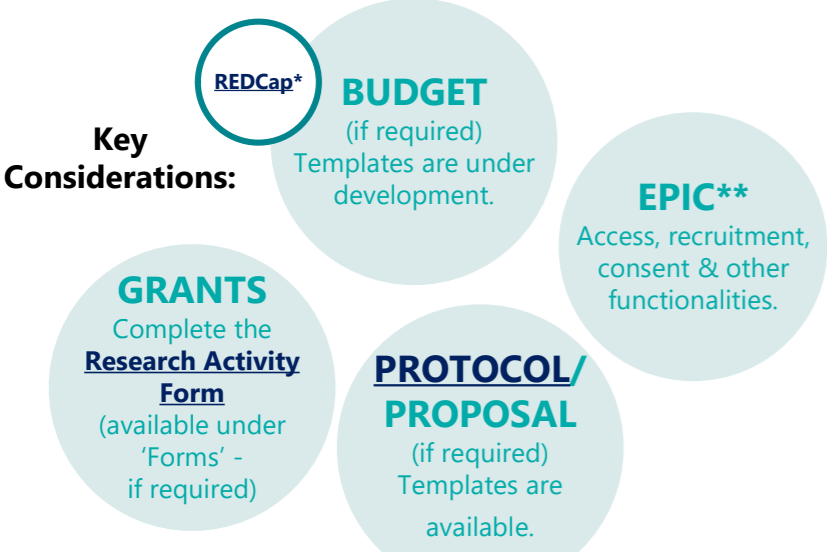
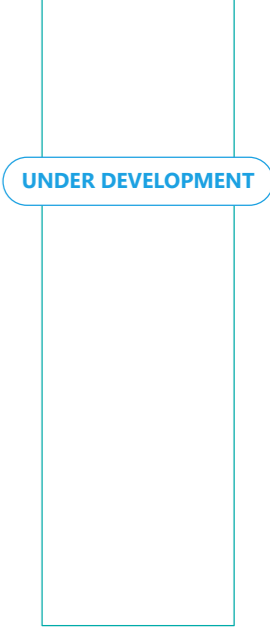
**Step 2: Reviews & Approvals**



**Step 3: Ethics & Contracts**



**Step 4: Institutional Approval**



(\*) For REDCap access, please email REDCap@wchospital.ca

(\*\*) Contact Rodica.Balaci@wchospital.ca

Once completed, the PI/Study Lead will be issued a **Pre-REB/APQIP Certificate**

