



IMPLEMENTATION & EVALUATION BRIEF OVERVIEW

Joshua Porat-Dahlerbruch, PhD, RN
Celia Laur, PhD

IMPLEMENTATION AND EVALUATION

- Implementation involves tailoring an intervention to meet a specific setting and population's needs
- Many factors must be considered, such as the intended primary intervention users
- Evaluation focuses on assessing an intervention's success and uptake
- Key factors to consider in implementation & evaluation: maintenance/sustainability and equity

RE-AIM FRAMEWORK

- Addresses the research-to-practice gap
- Facilitates transparent implementation reporting
- Aids in intervention dissemination
- Enhances planning

WHAT IS RE-AIM?



- **Reach** into the target population
- **Effectiveness** or efficacy
- **Adoption** by target staff, settings, systems and communities
- **Implementation** – consistency and cost of delivery of intervention
- **Maintenance/sustainment** of intervention effects in individuals and settings over time.

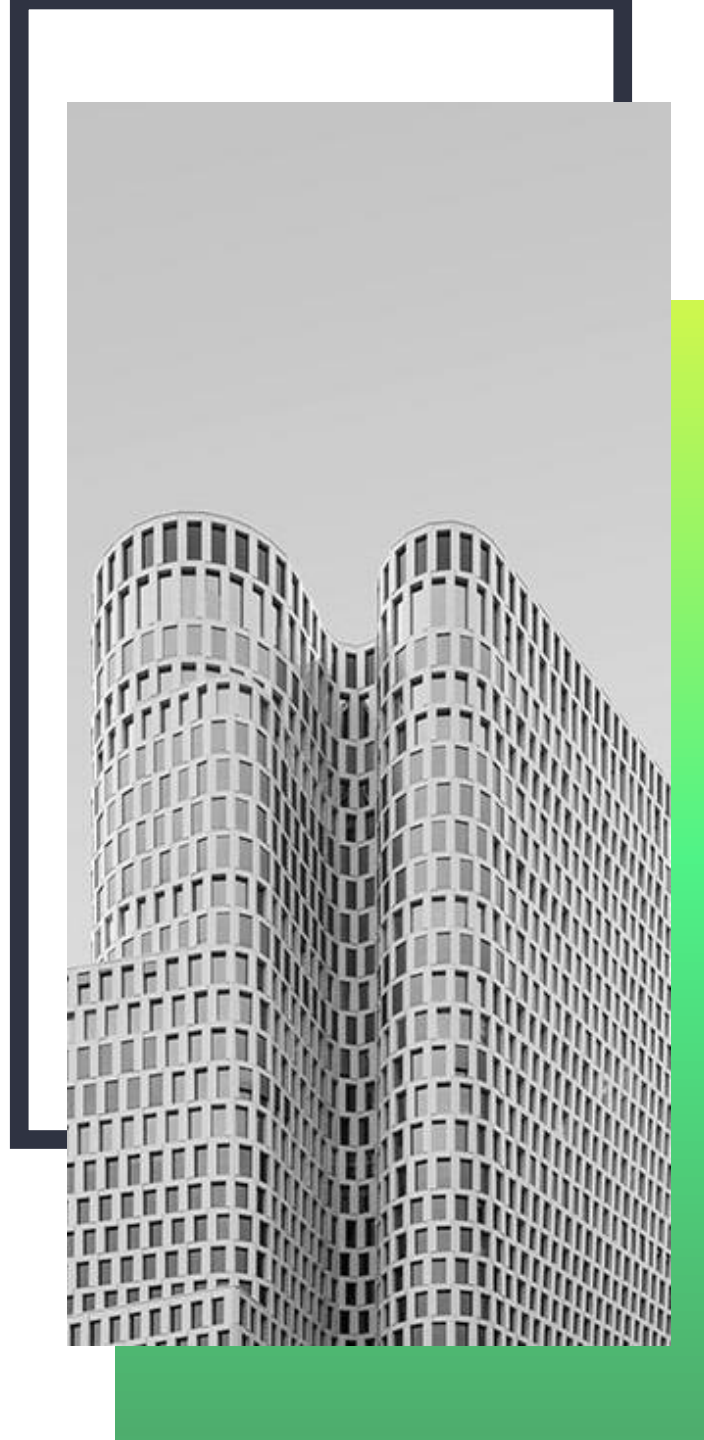
A grayscale background image of a city skyline with various skyscrapers. A dark blue L-shaped graphic element is positioned in the top right corner. A vertical green bar is on the left side of the white content area, and a horizontal green bar is at the bottom.

REACH

- Number of proportion and representativeness of individuals willing to participate in a given initiative

Effectiveness

- Impact of an intervention on outcomes



Adoption

- Number or proportion and representativeness of settings and agents willing to initiate a program

Implementation

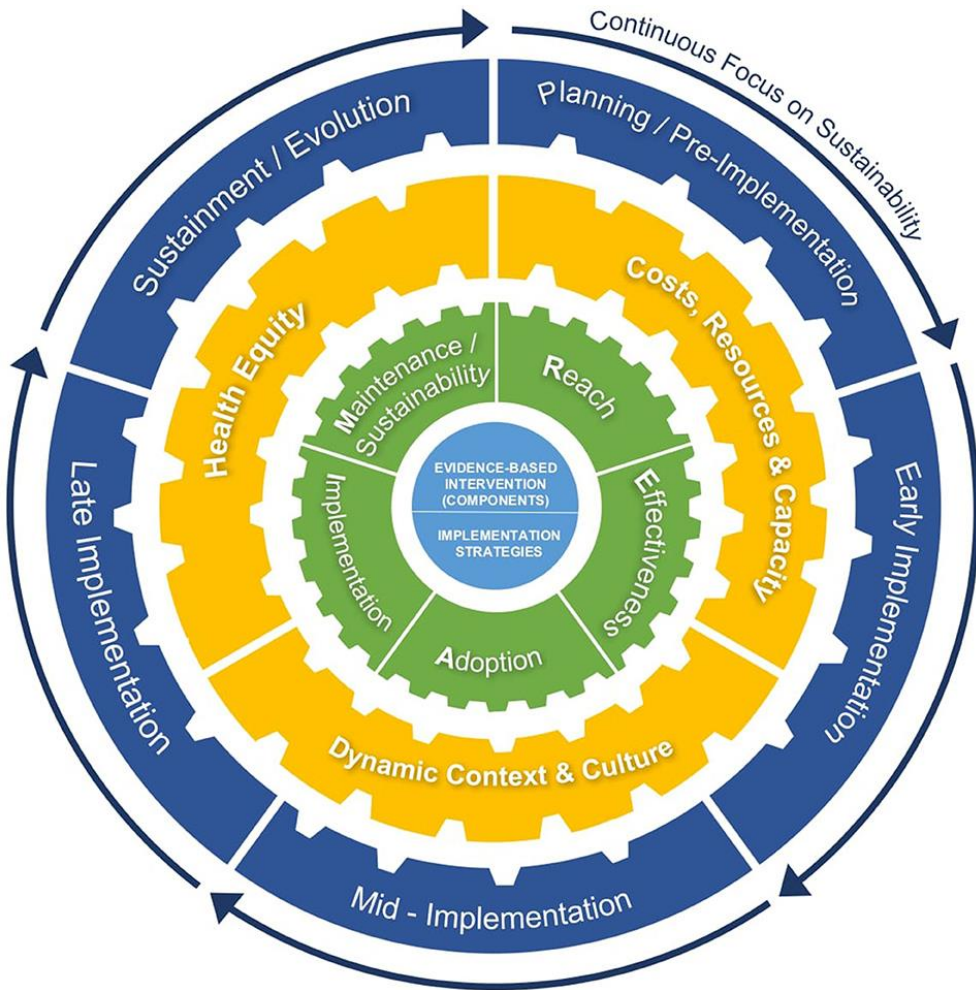
- At the setting level, intervention agents' fidelity to various elements of an intervention
- This can include:
 - Consistency of delivery as intended
 - Time and cost



Maintenance

- Extent of institutionalization

RE-AIM EXTENSION



- This extension focuses more on key factors influencing the sustainability of interventions:
 - Dynamic context
 - Promoting health equity

A grayscale background image of a city skyline with various skyscrapers. A dark blue L-shaped graphic element is in the top right corner. A vertical green bar is on the left side of the white content area, and a horizontal green bar is at the bottom of the white content area.

TABLES

- RE-AIM (general)
- RE-AIM (sustainability)
- RE-AIM (equity)
- Challenges in evaluation
- Communicating evaluation results
- Tips for effective evaluations